



**SKT 673
GLASS TOP TABLE**

DIMENSION :
10MM X 1000 X 2000 (H760)

M.3 :
0.3711

PACKING:
1PC / 2CTNS

G.W / N.W ;
86 / 78KG



**SKT 462
FIXED TOP TABLE**

DIMENSION :
20MM X 1000 X 1600 (H750)

M.3 :
0.1992

PACKING:

1PC / CTN

G.W / N.W ;

57 / 52KG



**SKT 621
GLASS TOP TABLE**

DIMENSION :
32MM X 1000 X 1676 (H750)

M.3 :
0.4025

PACKING:
1PC / 2CTNS

G.W / N.W ;
66 / 63KG



SK T629

DESCRIPTION :

FIXED TOP TABLE

PRODUCT SIZE :

25 X 950 X 1800MM

APRON :

90MM

LEG :

SQUARE 90MM

PACKING :

1PC / CTN

CARTON SIZE :

1840 X 990 X 130MM (ID)

M.3 :

0.2590

GROSS WEIGHT :

54 / 57KGS

LOADABILITY +/- 5% ;

20' CONT. 100PCS

40' CONT. 216PCS



**SKT 651
FIXED TOP TABLE**

DIMENSION :
20MM X 915 X 1696 (H782)

M.3 :
0.2906

PACKING:
1PC / 2CTNS
G.W / N.W ;
41 / 35KG



**SKT 665
GLASS TOP TABLE**

DIMENSION :
10MM X 42" X 72" (H742)

M.3 :
0.5836

PACKING:
1PC / 2CTNS

G.W / N.W ;
86 / 78KG



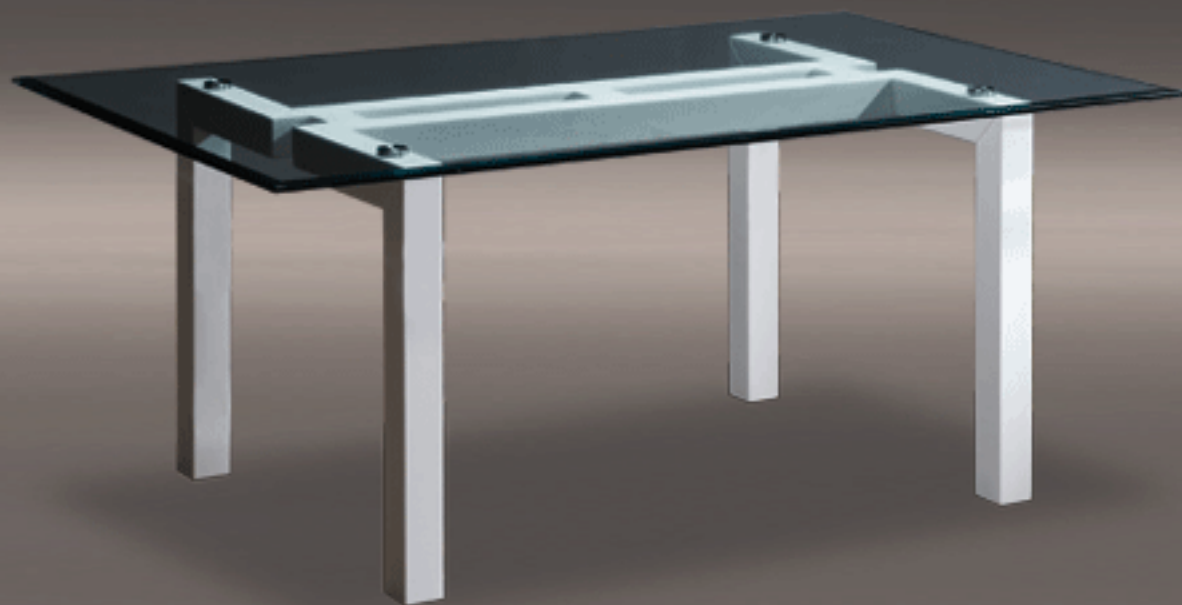
**SKT 665
GLASS TOP TABLE**

DIMENSION :
10MM X 42" X 72" (H742)

M.3 :
0.5836

PACKING:
1PC / 2CTNS

G.W / N.W ;
86 / 78KG



**SKT 665
GLASS TOP TABLE**

DIMENSION :
10MM X 42" X 72" (H742)

M.3 :
0.5836

PACKING:
1PC / 2CTNS

G.W / N.W ;
86 / 78KG



**SKT 667
FIXED TOP TABLE**

DIMENSION :
25MM X 950 X 1800 (H776)

M.3 :
0.2178

PACKING:
1PC / 2CTNS

G.W / N.W ;
56 / 50.5KG



**SKT 667
FIXED TOP TABLE**

DIMENSION :
25MM X 950 X 1800 (H776)

M.3 :
0.2178

PACKING:
1PC / 2CTNS

G.W / N.W ;
56 / 50.5KG



**SKT 667
FIXED TOP TABLE**

DIMENSION :
25MM X 950 X 1800 (H776)

M.3 :
0.2178

PACKING:
1PC / 2CTNS

G.W / N.W ;
56 / 50.5KG



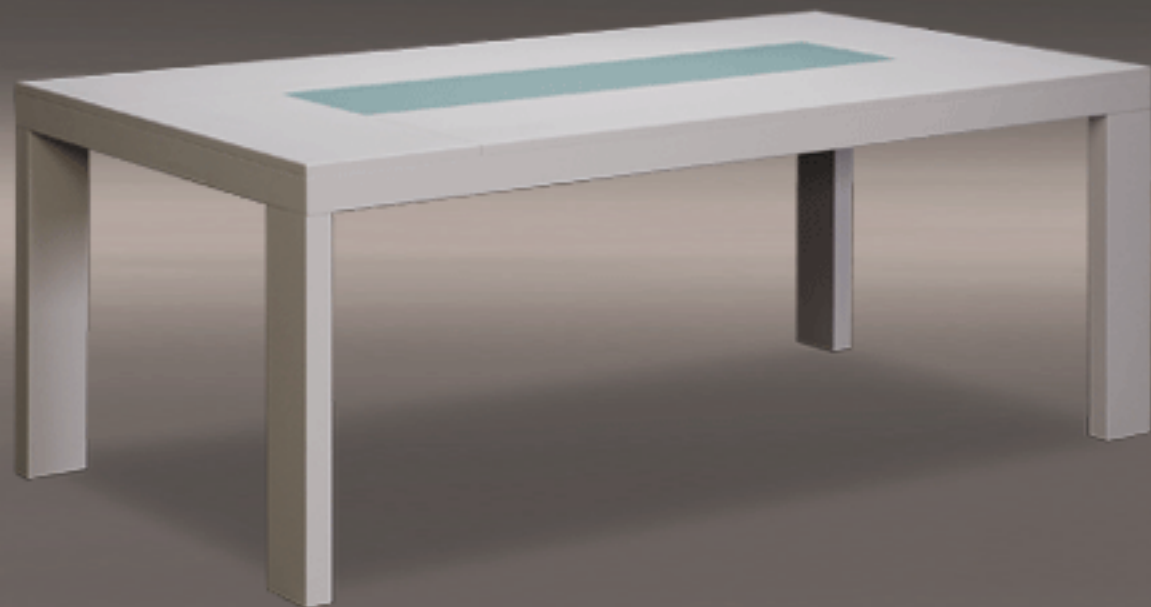
**SKT 667
FIXED TOP TABLE**

DIMENSION :
25MM X 950 X 1800 (H776)

M.3 :
0.2178

PACKING:
1PC / 2CTNS

G.W / N.W ;
56 / 50.5KG



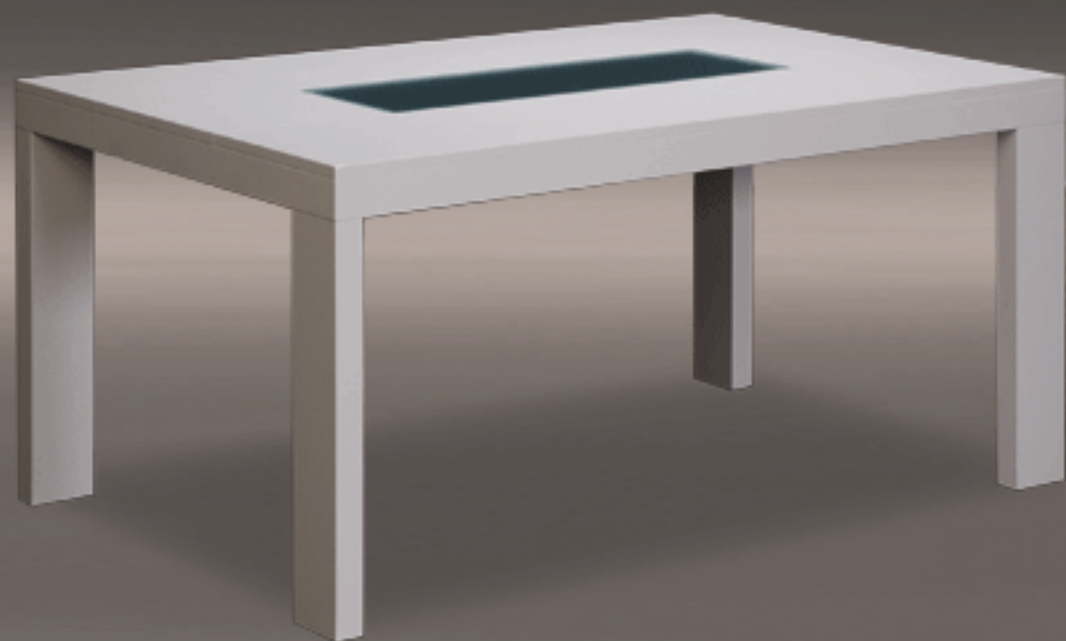
**SKT 669
FIXED TOP TABLE**

DIMENSION :
20MM X 1000 X 2000 (H760)

M.3 :
0.2432

PACKING:
1PC / CTN

G.W / N.W ;
48 / 43KG



SKT 669
FIXED TOP TABLE

DIMENSION :
20MM X 1000 X 1600 (H760)

M.3 :
0.1958

PACKING:
1PC / CTN

G.W / N.W ;
41 / 38KG



**SKT 669
FIXED TOP TABLE**

DIMENSION :
20MM X 1000 X 2000 (H760)

M.3 :
0.2432

PACKING:
1PC / CTN

G.W / N.W ;
48 / 43KG



**SKT 673
GLASS TOP TABLE**

DIMENSION :
10MM X 1000 X 2000 (H760)

M.3 :
0.3711

PACKING:
1PC / 2CTNS

G.W / N.W ;
86 / 78KG



**SKT 673
GLASS TOP TABLE**

DIMENSION :
10MM X 1500 X 1500 (H760)

M.3 :
0.4136

PACKING:
1PC / 2CTNS

G.W / N.W ;
93 / 86KG



**SKT 675
FIXED TABLE**

DIMENSION :
(18+18)MM X 1000 X 1600 (H785)

M.3 :
0.4970

PACKING:
1PC / 2CTNS

G.W / N.W ;
66 / 61.5KG



**SKT 675
FIXED TABLE**

DIMENSION :
(18+18)MM X 1000 X 2000 (H785)

M.3 :
0.5768

PACKING:
1PC / 2CTNS

G.W / N.W ;
76 / 71.5KG



**SKT 675
FIXED TABLE**

DIMENSION :
(18+18)MM X 1000 X 2000 (H785)

M.3 :
0.5768

PACKING:
1PC / 2CTNS

G.W / N.W ;
76 / 71.5KG



**SKT 675
FIXED TABLE**

DIMENSION :
(18+18)MM X 1000 X 1600 (H785)

M.3 :
0.4970

PACKING:
1PC / 2CTNS

G.W / N.W ;
66 / 61.5KG



**SKT 684
GLASS TOP TABLE**

DIMENSION :
10MM X 1000 X 1600 (H750)

M.3 :
0.1358

PACKING:
1PC / 2CTNS

G.W / N.W ;
61.5 / 56KG



**SKT 821
FIXED TOP TABLE**

DIMENSION :
20MM X 36" X 66" (H750)

M.3 :
0.2463

PACKING:
1PC / 2CTNS
G.W / N.W ;
35.5 / 32KG



**SKT 821
FIXED TOP TABLE**

DIMENSION :
20MM X 36" X 66" (H750)

M.3 :
0.2463

PACKING:
1PC / 2CTNS
G.W / N.W ;
35.5 / 32KG